

How to find us

The Nuclear Medicine department is on level 3 Chelsea Wing. From the main entrance in Sydney Wing please go to level 3 and follow signs for the bridge linking the two wings.

- **Parking**

Very limited pay and display parking is available on site. There are disabled parking spaces in Cale Street, Foulis Terrace and in Sydney Wing car park. Very little public parking is available in the neighbouring streets. We strongly recommend that you use public transport if at all possible.

- **Underground**

The nearest underground station is South Kensington (Piccadilly, District and Circle Lines). Royal Brompton Hospital is a five to ten minute walk away.

- **Buses**

The following buses serve the area:
No's 14, 345 and 49 along Fulham Road
No's 11, 19, 22 and 319 on King's Road
No 211 on Sydney Street.

Ambulance

If you need an ambulance to bring you to your appointment, please ask your family doctor to arrange this.

© Royal Brompton & Harefield NHS Trust

Royal Brompton Hospital
Sydney Street
London
SW3 6NP
tel: 020 7352 8121

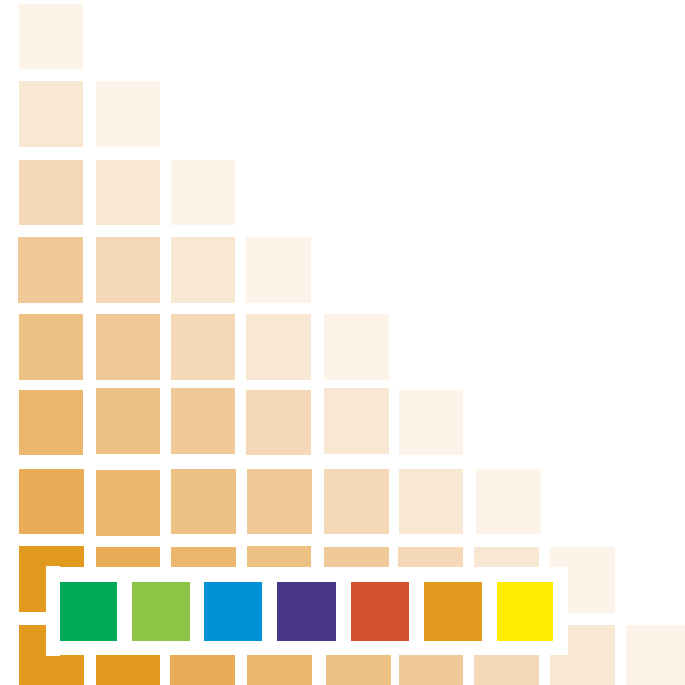
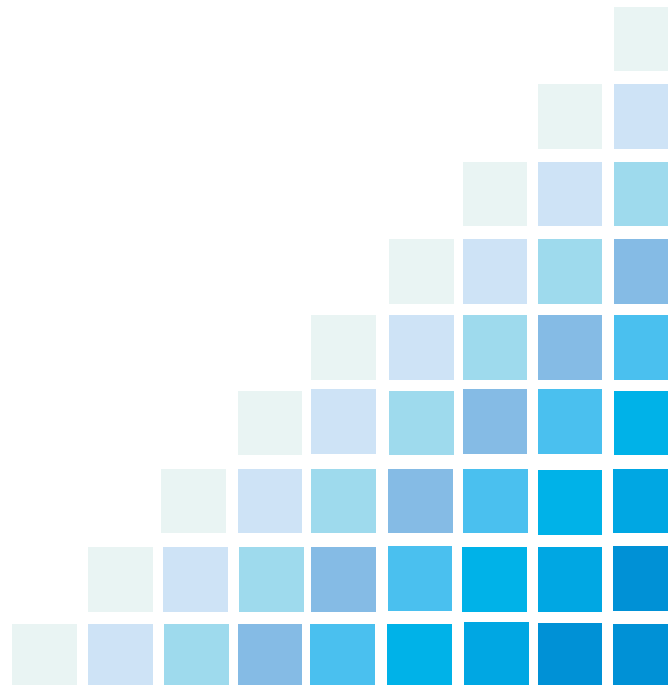
Harefield Hospital
Hill End Road
Harefield
Middlesex
UB9 6JH
tel: 01895 823 737

minicom: 01895 828 534
website: www.rbht.nhs.uk

October 2006

Royal Brompton Hospital

Your Nuclear Medicine Lung Permeability Scan



Appointment information

Name:

Date:

Time:

Hospital: **Royal Brompton Hospital**

Points to remember on the day

- There is no special preparation for this scan.
- Please do not bring children with you to the department. This is to avoid exposing them to unnecessary radiation.

What is Nuclear Medicine?

Nuclear Medicine is a way of taking images of your body. We use a special camera that detects gamma-rays given out by a 'tracer' that is injected into your body. The tracer contains a small amount of radioactive material which means that your body shows up in the images we take.

About your lung permeability scan

This scan is used to look at the lining of your lungs. You will be asked to breathe in an aerosol containing a small amount of radioactive material, which means we can take pictures of your lungs. This takes about four minutes.

You will then be asked to lie on a couch for 45 minutes while the pictures of your lungs are taken. It is important that you try to stay very still during this part of the scan as the pictures are taken continuously.

Is there any risk from the radiation?

The amount of radiation used is kept to a minimum. We strongly believe that the benefits of the scan far outweigh any possible risk to your health. If you have any concerns that you would like to discuss, please contact us.

Are there any side effects?

There are no known side effects from having this scan. The substance you will breathe in will not make you sleepy nor will it prevent you from driving a car.

Female patients

You should not have a lung permeability scan if you are pregnant or if you think you might be pregnant.

Please tell us before the test if you think you might be pregnant, if you are breast-feeding or if you have very young children.

Medicines

For most scans there is no need to change any regular treatment.

If you are unsure please contact us.

After your scan

Following your scan you can eat and drink normally. You may go anywhere you wish but please try to avoid long periods of close contact with children for 24 hours. This is to avoid exposing them to unnecessary radiation.

Results

The results of your scan will be sent to the hospital consultant who referred you to us.

Additional information

Please note that our Nuclear Medicine department scans many people every day. We try to keep to your appointment time as closely as possible but should you be late, or if there is an emergency at the hospital, it may not be possible to perform your scan immediately.

Queries

If you have any queries about your scan or would like to change your appointment date, please telephone us on **020 7351 8666**. If the line is busy and you are diverted to an answering machine, please leave a message and telephone number and we will get in touch with you as soon as possible.